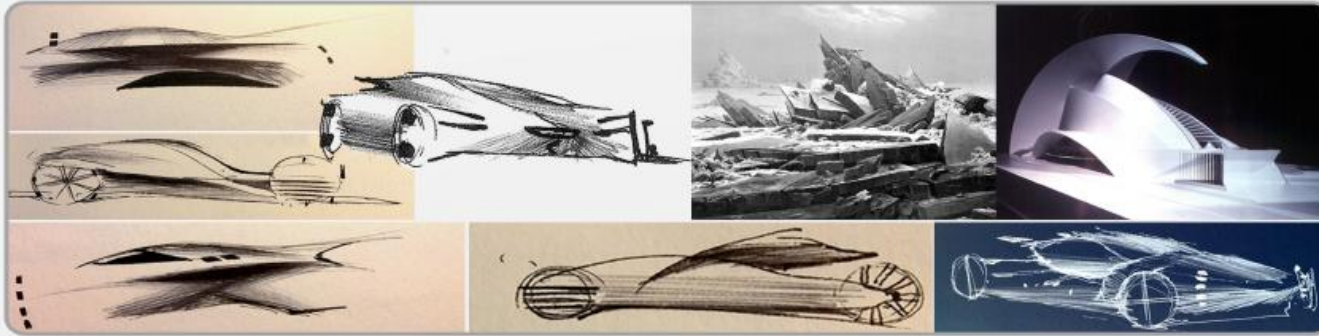
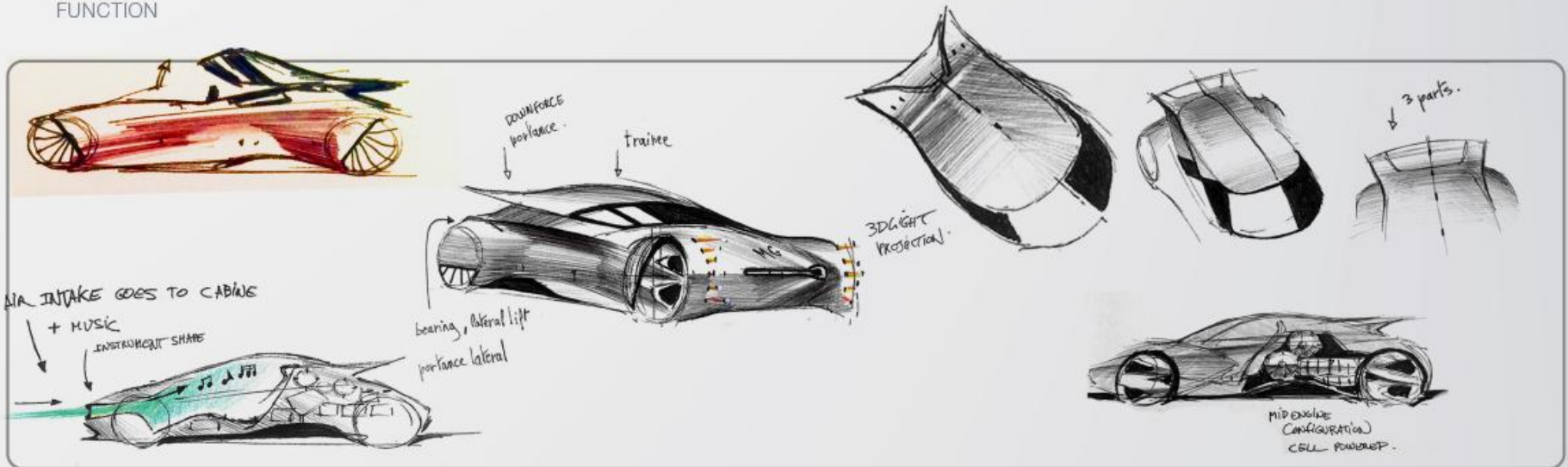


INSPIRATION



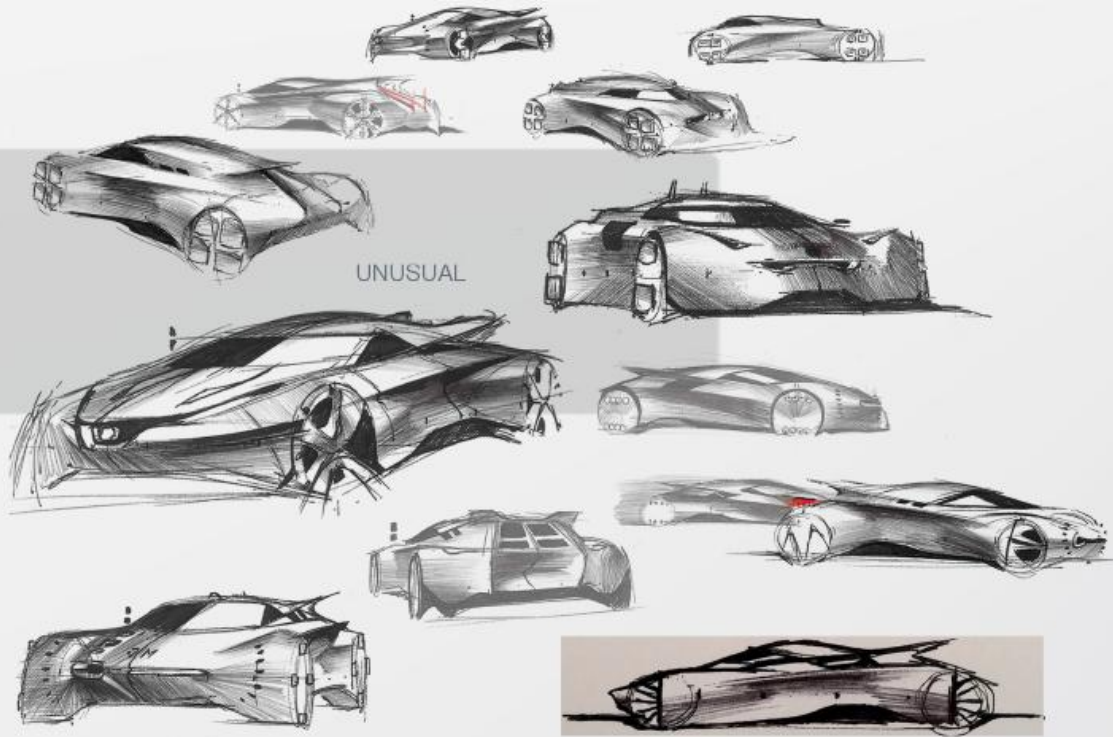
How to hide technology in order to give the best automotive experience?

FUNCTION



RESEARCH

INVISIBLE TECHNOLOGY FOR ENJOYABLE DRIVING EXPERIENCES



TENSION



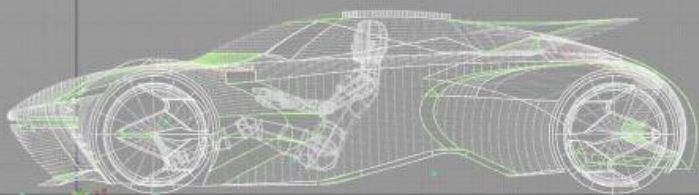
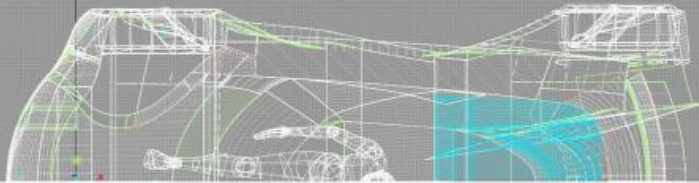
FINAL RENDERING



The DLO is connected to the spoiler and create a diagonal and a dynamic feeling in the side view. The front overhang is bigger than the rear one in order to equilibrate the center of gravity and to emphasis the dynamic gesture.

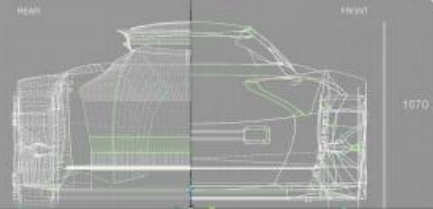
PACKAGE

MID-ELECTRIC ENGINE



850 2750 570  
4050

ASYMMETRIC RIM

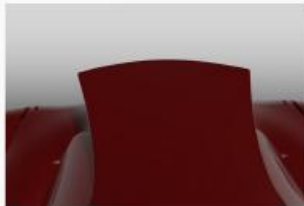


REAR FRONT  
1070  
1920



### 3D HOLOGRAPHIC LIGHT

This feature can open new fields in the future of car light systems. The 3D projected element can change in order to be adapted to the situation. Thus, the light source is hidden.



The spoiler can be divided in 3 parts. The middle part regulate the drag and enhance the aerodynamic brake. The two sides parts can improve the lateral downforce when it is needed.

