

# JUST BE HAPPY

=



+



+

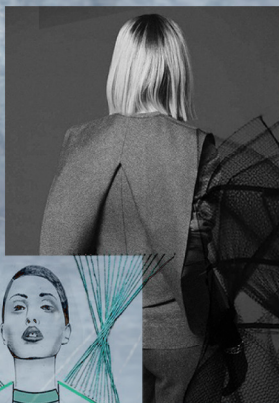


+

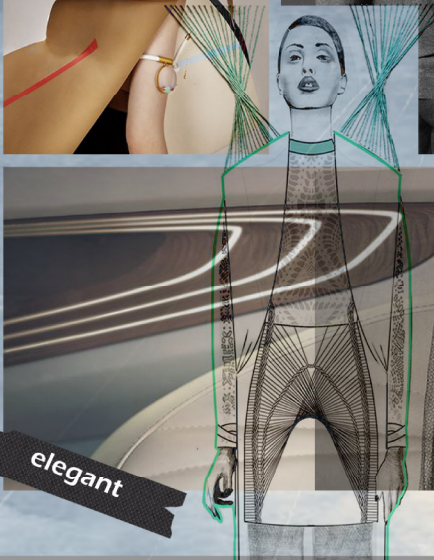


At 2030, the rise of various technologies, AR technology has achieved remarkable development and began to be frequently applied in the transportation industry.

Folded



Technology



# GTR

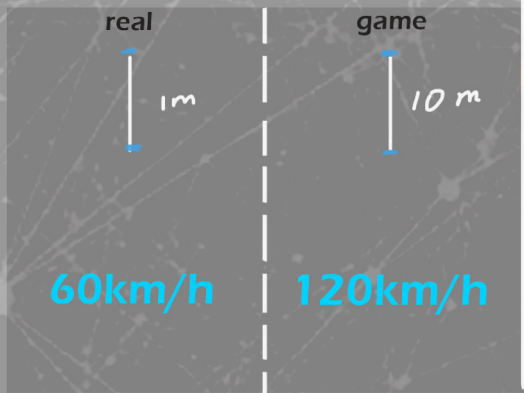
passionate

elegant

Soft

This interior also works with GTR. When the passengers turn on the racing game mode, the steering wheel will turn on and the brainwave sensor near the passenger's head will lead the passengers to enter the simulation racing game interface. At this point, the front windshield of the car that the passenger faces will become a virtual ar projection screen that is only visible inside. The distance in the game content will be related to reality {turn, straight, traffic lights, vehicles will appear in the game scene as the reality}.

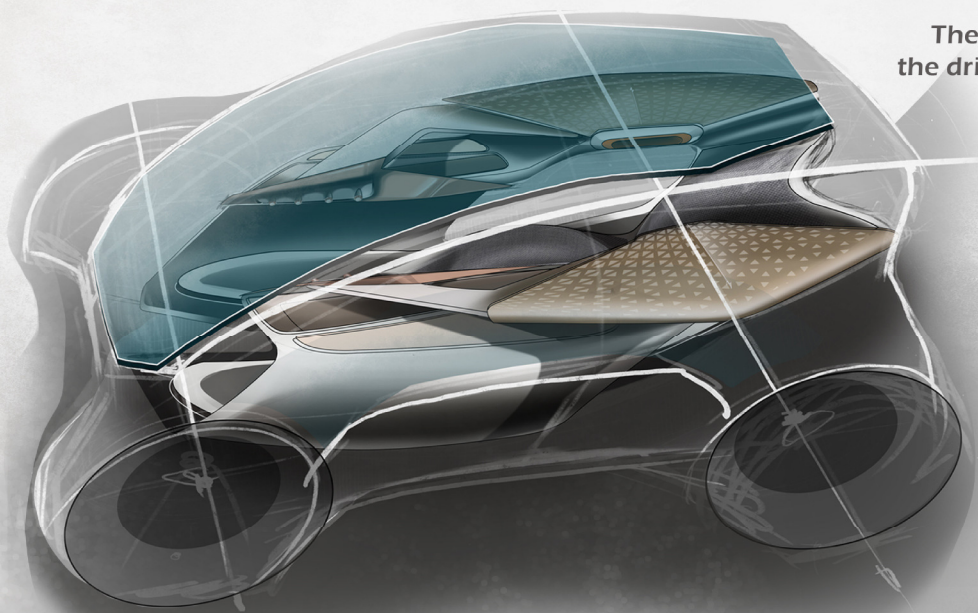
- 1 the same straight distance, the distance in the game will be longer than reality.
- 2 The driving speed sense of the passengers in the game state will be different from the reality, the reason is the influence of AR and the cooperation of the 6D interior space, more realistic
- 3 The passenger driving is 60km/h, but in the game, the passenger perceives it as 180km/h.



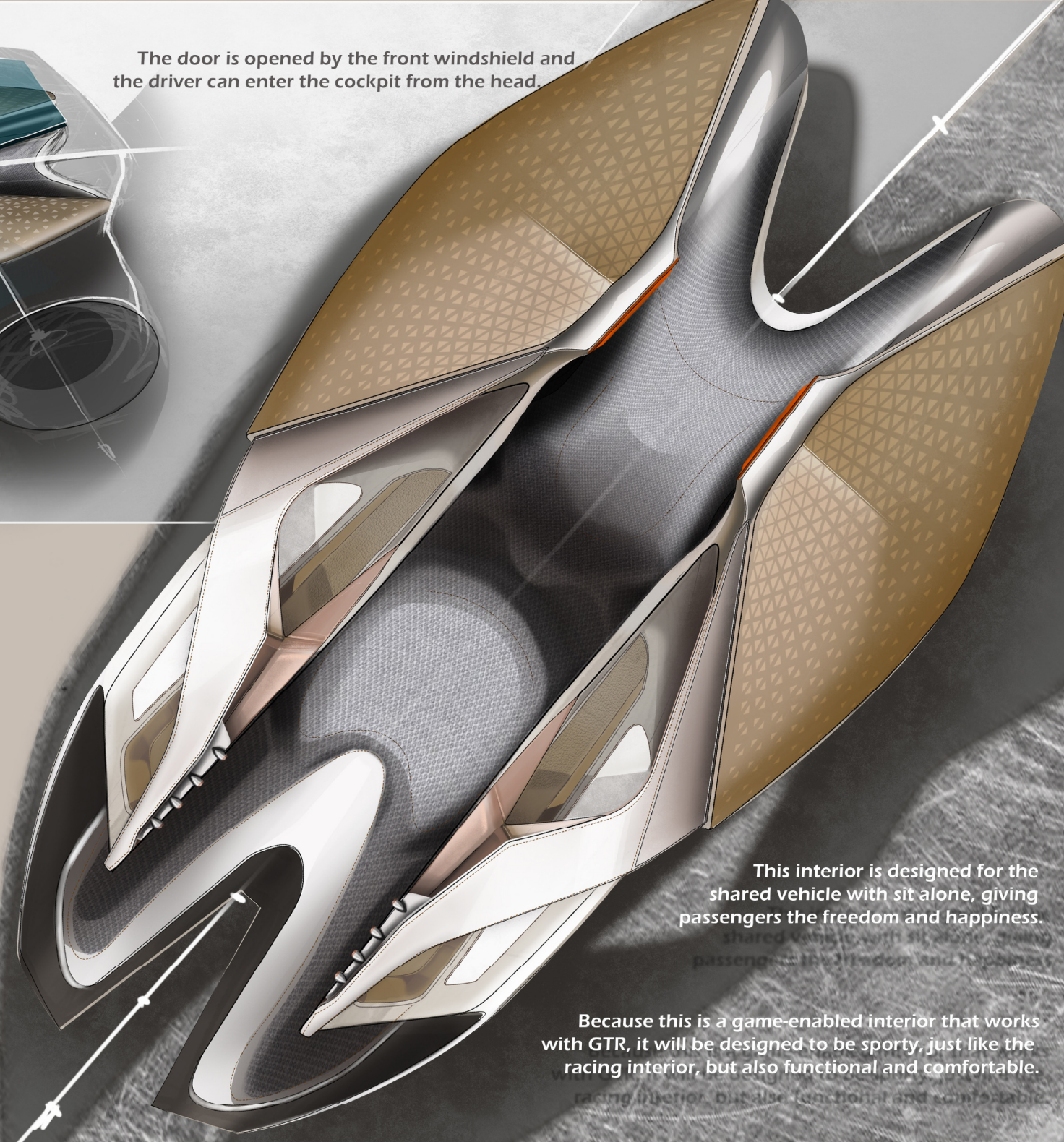
normal driving



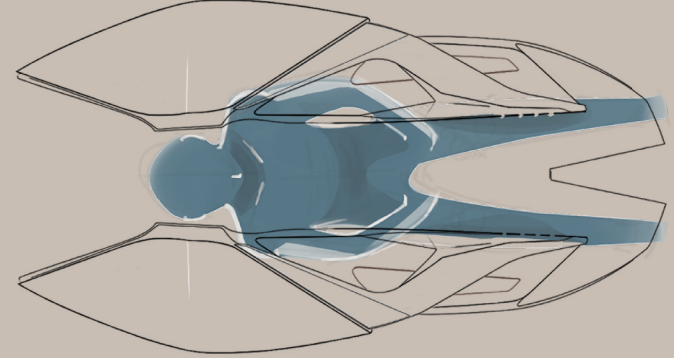
racing driving



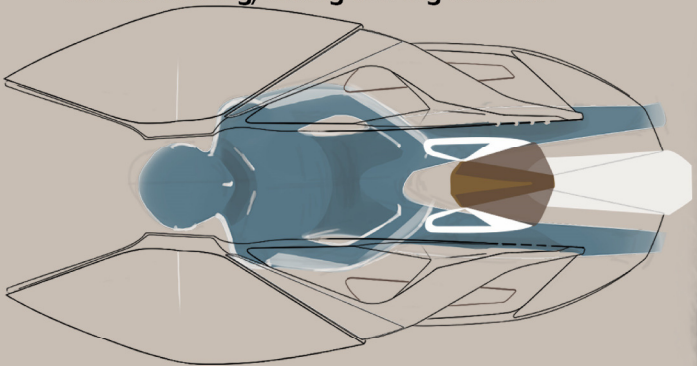
The door is opened by the front windshield and the driver can enter the cockpit from the head.



rest function



normal driving/racing driving function



This interior is designed for the shared vehicle with sit alone, giving passengers the freedom and happiness.

Because this is a game-enabled interior that works with GTR, it will be designed to be sporty, just like the racing interior, but also functional and comfortable.

## Z-fold Folding Steering Wheel

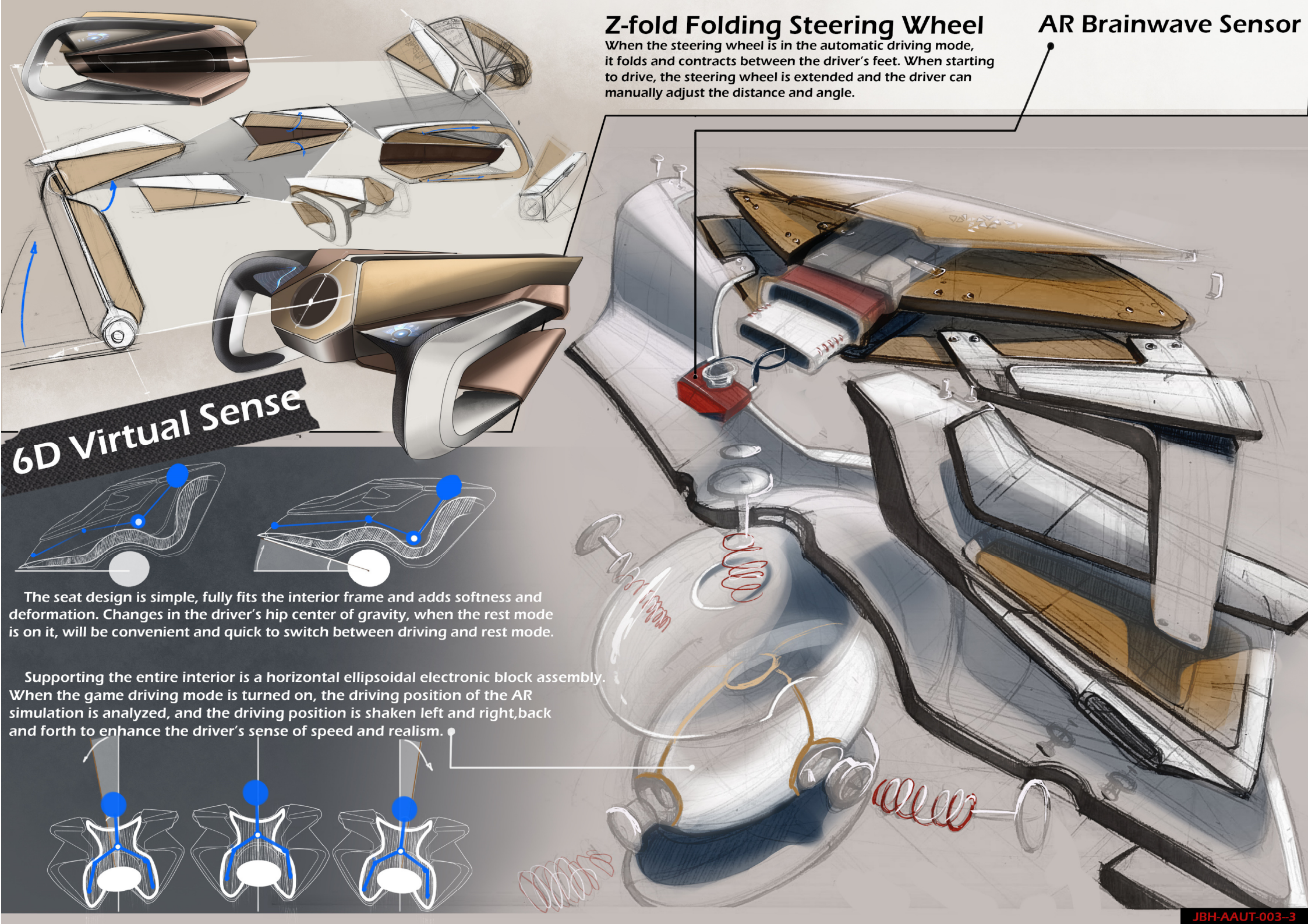
When the steering wheel is in the automatic driving mode, it folds and contracts between the driver's feet. When starting to drive, the steering wheel is extended and the driver can manually adjust the distance and angle.

## AR Brainwave Sensor

## 6D Virtual Sense

The seat design is simple, fully fits the interior frame and adds softness and deformation. Changes in the driver's hip center of gravity, when the rest mode is on it, will be convenient and quick to switch between driving and rest mode.

Supporting the entire interior is a horizontal ellipsoidal electronic block assembly. When the game driving mode is turned on, the driving position of the AR simulation is analyzed, and the driving position is shaken left and right, back and forth to enhance the driver's sense of speed and realism.



“Just enjoy the game and drive

Just be happy”

